

1

2

3

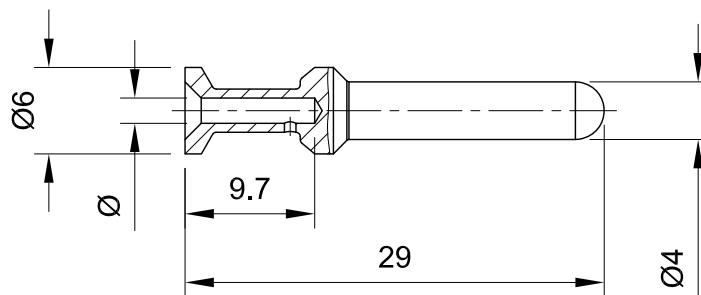
4

5

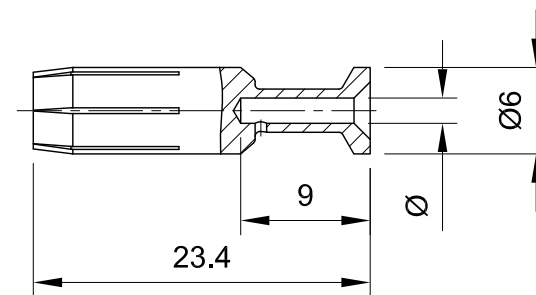
6

A

Male contact



Female contact



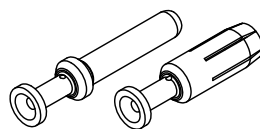
A

B

B

C

C



## Technical data:

- Type: Crimp contact
- Operating current:  $\leq 40\text{A}$
- Contact resistance:  $\leq 1\text{m}\Omega$
- Material(contacts): Copper alloy
- Surface(contacts): Silver plated
- RoHS: Compliant
- Specifications: IEC61984, EN60664-1

Silver plated		Gender	$\varnothing$	Conductor cross-section in $\text{mm}^2$	Stripping length in mm
Part No.	Type Name				
10 34 000 7100	CCS-1.5-M	Male	1.78	1.5	9.5
10 34 000 7101	CCS-2.5-M	Male	2.28	2.5	9.5
10 34 000 7105	CCS-3.0-M	Male	2.58	3.0	9.5
10 34 000 7102	CCS-4.0-M	Male	2.88	4.0	9.5
10 34 000 7103	CCS-6.0-M	Male	3.53	6.0	9.5
10 34 000 7104	CCS-10-M	Male	4.3	10	Depending on isolation body
10 34 000 7200	CCS-1.5-F	Female	1.78	1.5	9.5
10 34 000 7201	CCS-2.5-F	Female	2.28	2.5	9.5
10 34 000 7205	CCS-3.0-F	Female	2.58	3.0	9.5
10 34 000 7202	CCS-4.0-F	Female	2.88	4.0	9.5
10 34 000 7203	CCS-6.0-F	Female	3.53	6.0	9.5
10 34 000 7204	CCS-10-F	Female	4.3	10	Depending on isolation body

D

D



All Dimensions in mm  
Original Size DIN A4

Date  
2019-09-24

Drawing No.  
TC5793643

Rev.  
A00

Scale  
2:1



InKonn (Suzhou) Electric Technology Co.,Ltd.

Part No.  
10 34 000 7202

Created by  
Shuxu Huang

Checked by  
Yiyi Luo

Page  
1/1

Type Name  
CCS-4.0-F

1

2

3

4

5

6